

Monday, 08 January 2024
MET1 - ATMOSPHERIC RESEARCH AIRCRAFT - G-LUXE

© OpenStreetMap contributors and RocketRoute Ltd.

STD EGTC 1130z

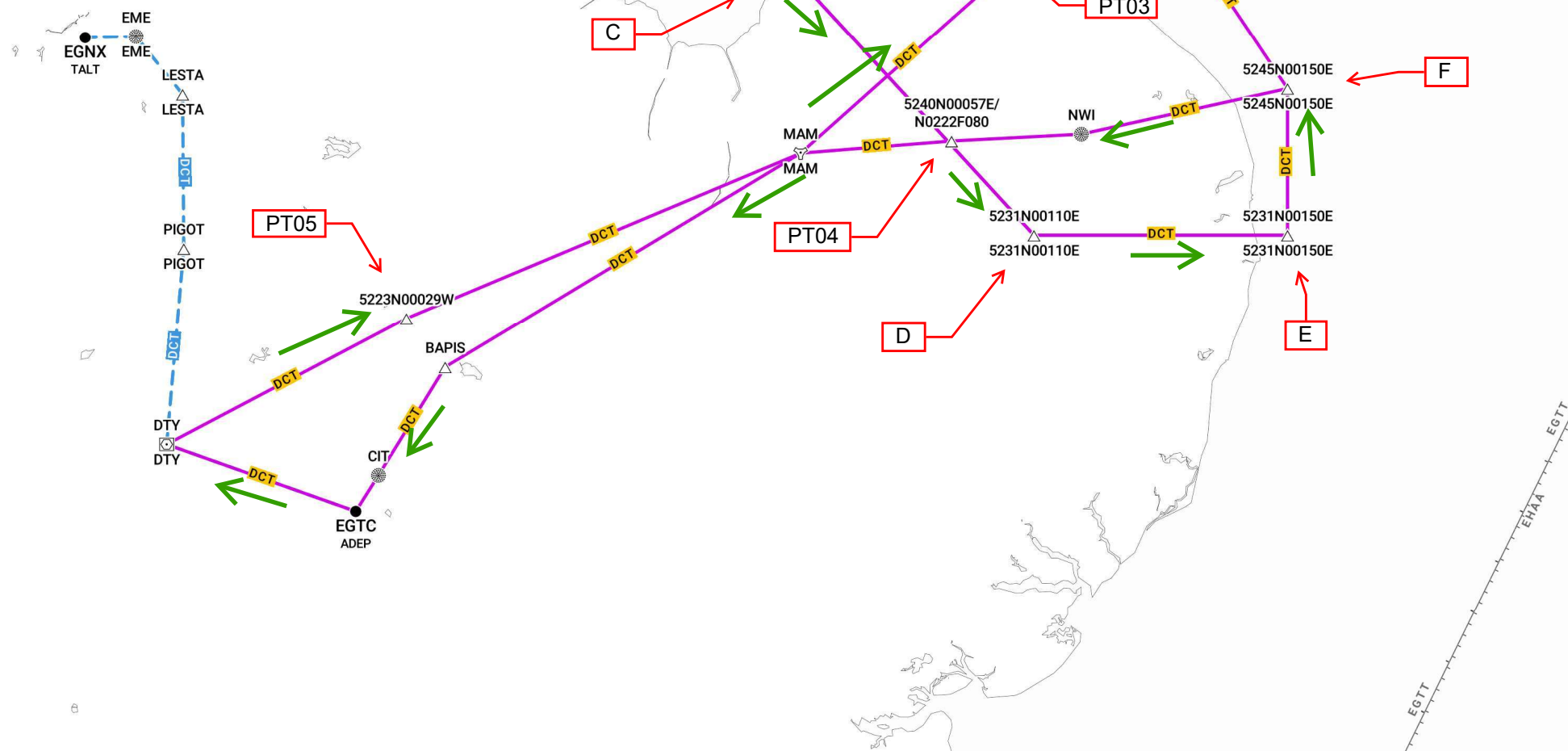
Climb to FL080 and route toward East Anglia area for low-level training;

At point "PT03" descend initially to 1000ft ASL and operate through points "A", "B", "C", "D", "E", "F", and "G". (training at various alts btwn 500ft and 2500ft AGL over land and 50ft and 2500ft over water);

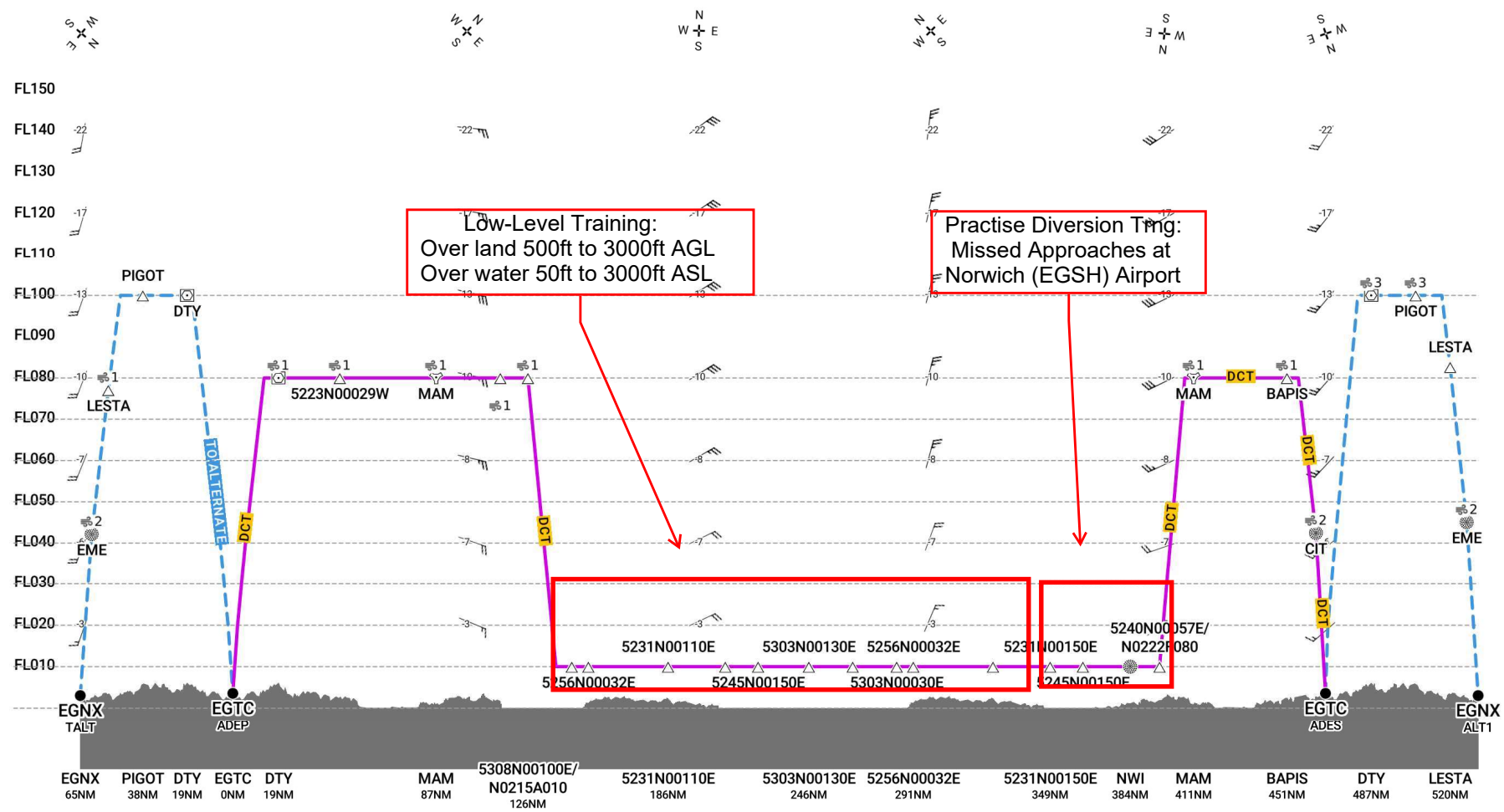
Repeat above circuit, then position to Norwich (EGSH) for missed approaches;

Upon completion, climb to FL080 and recover to Cranfield via "PT04", MAM and BAPIS.

ETA EGTC 1430z.



EGTC-EGTC [A/C GLUXE]



Route

SID/STAR

MEA

Route to ALT/TALT

Tropopause

Terrain

Caution: terrain data not available for Greenland.

FIR boundary

Airway Label

EDTO Markers

SEOPS Glide Cone Coverage

Direction of Wind

Wind shear

Direction of Travel

Clear Air Turbulence Scale

In Cloud Turbulence Scale

Caution: no data available

Icing Scale

Wind Speed

