

EGTE (Exeter) - EGTE (Exeter) - MET1 (METMAN1)

GLUXE - UK ATMOSPHERIC RESEARCH AIRCRAFT

© OpenStreetMap contributors and RocketRoute Ltd.

STD EGTE 0900z

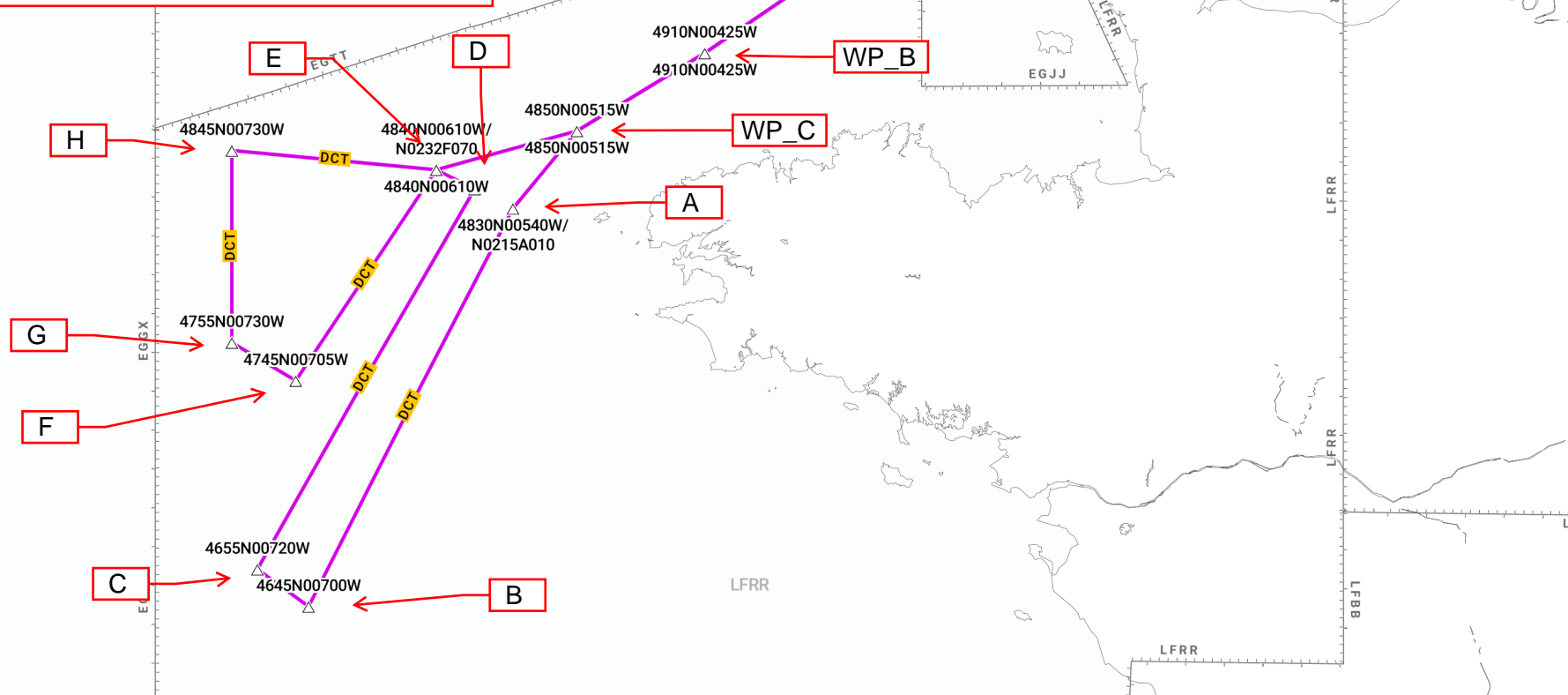
Depart Exeter (EGTE) and route at FL100 via BHD and SKESO

At SKESO descend to FL090; continue thru WP_A, WP_B, and WP_C;

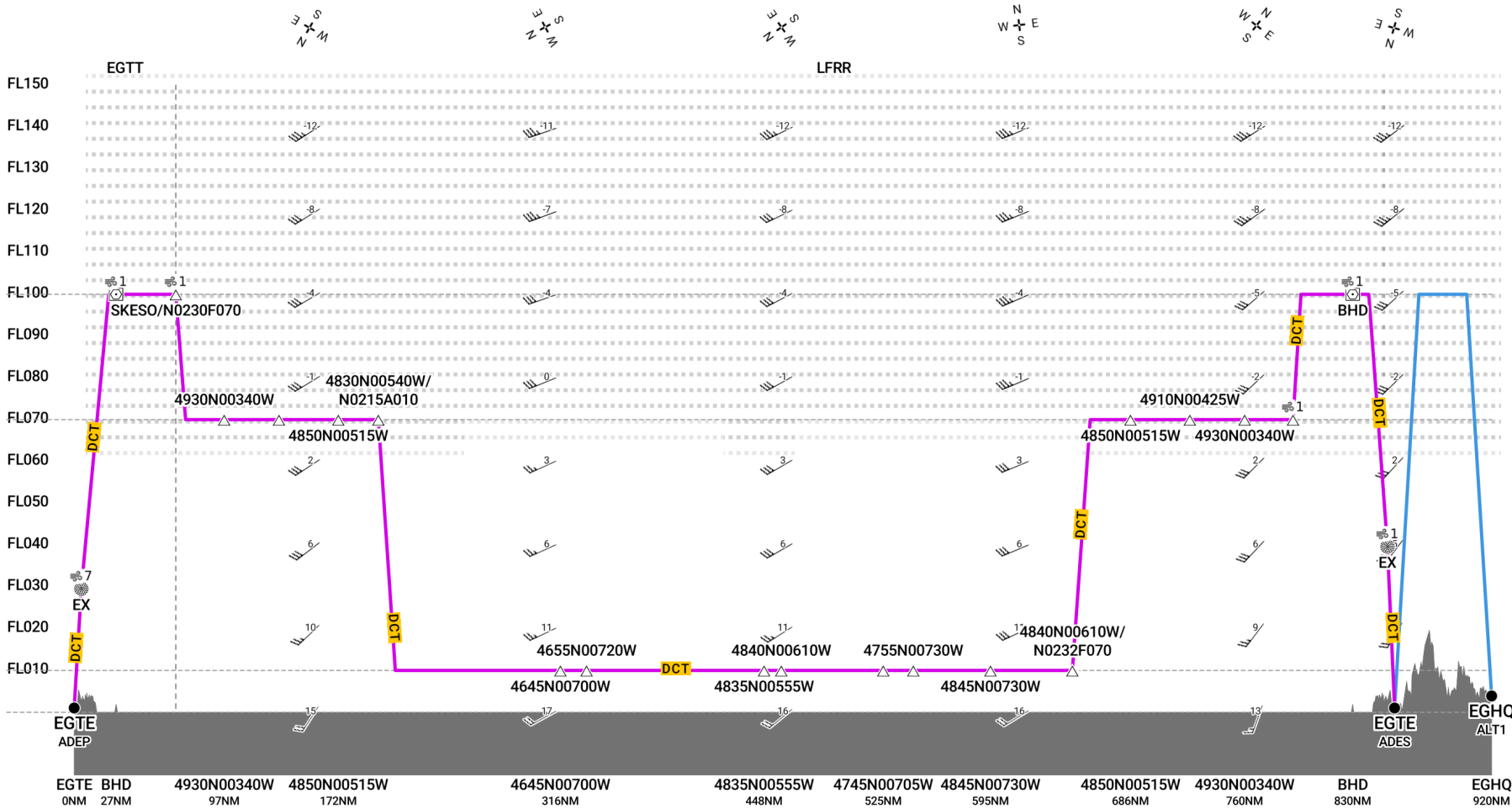
From point "A" drop radiosonde and follow with profile descent (1000ft/min) to 100ft ASL initially; then fly via points "B" through "H" (interrupting pattern to measure to measure ship exhaust plumes at alts btwn 100ft and 5000ft ASL).

Return to point E and climb to FL090 for recovery to Exeter (EGTE) via WP_C, _B, _A, SKESO, and BHD.

ETA EGTE 1330z



EGTE-EGTE [A/C GLUXE]



Route
 SID/STAR
 MEA
 Route to ALT/TALT
 Tropopause
 Terrain

Caution: terrain data not available for Greenland.

FIR boundary
 Airway Label
 EDTO Markers
 SEOPS Glide Cone Coverage
 Direction of Wind
 Wind shear
 Direction of Travel

Clear Air Turbulence Scale
 In Cloud Turbulence Scale

Caution, no data available

 Icing Scale
 Wind Speed

