

Monday, 15 July 2024
MET1 - ATMOSPHERIC RESEARCH AIRCRAFT - G-LUXE

STD EGTC 0900z

Climb to FL100 and route DTY, "PT06", BCN, and "A" toward Newquay (EGHQ);

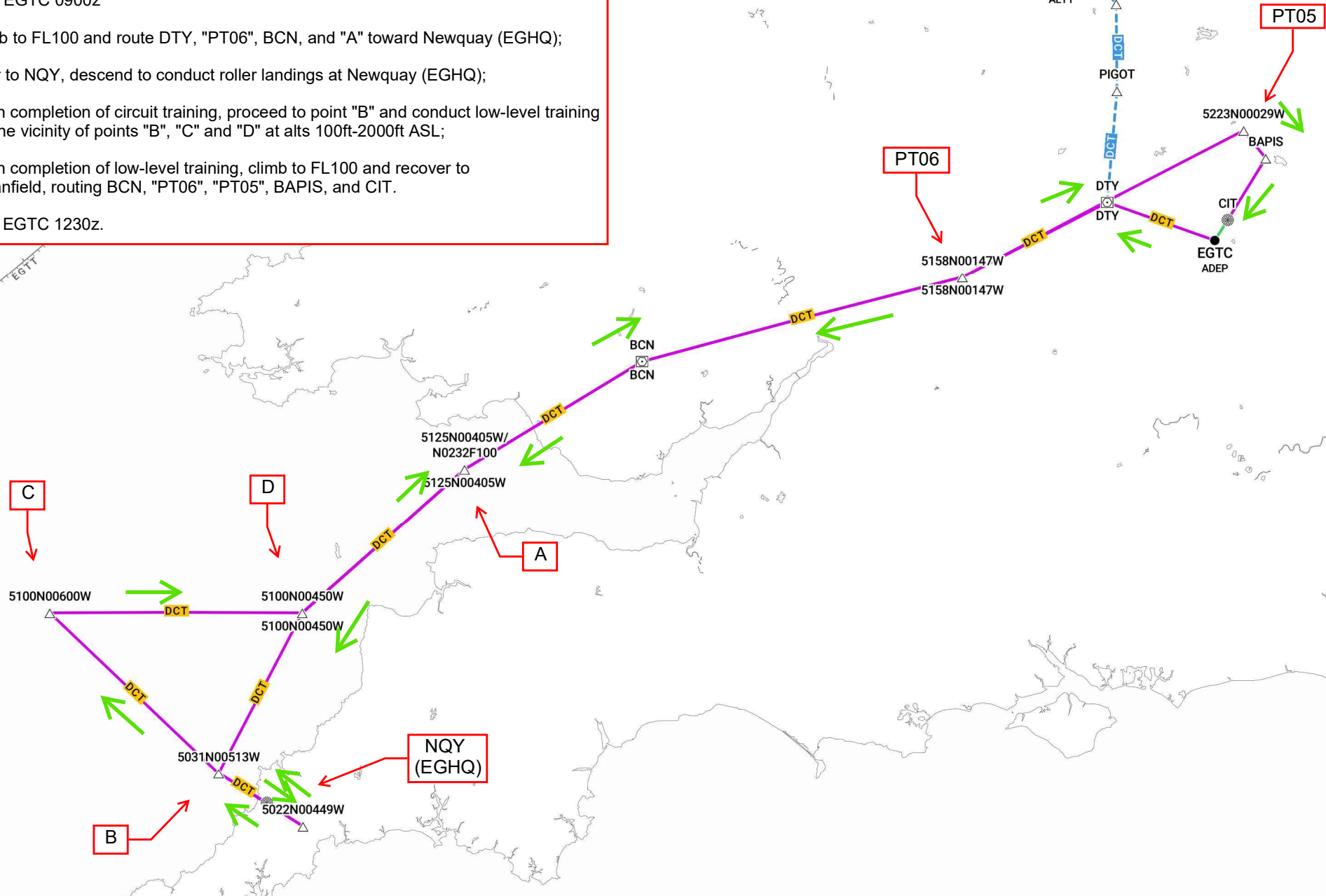
Prior to NQY, descend to conduct roller landings at Newquay (EGHQ);

Upon completion of circuit training, proceed to point "B" and conduct low-level training in the vicinity of points "B", "C" and "D" at alts 100ft-2000ft ASL;

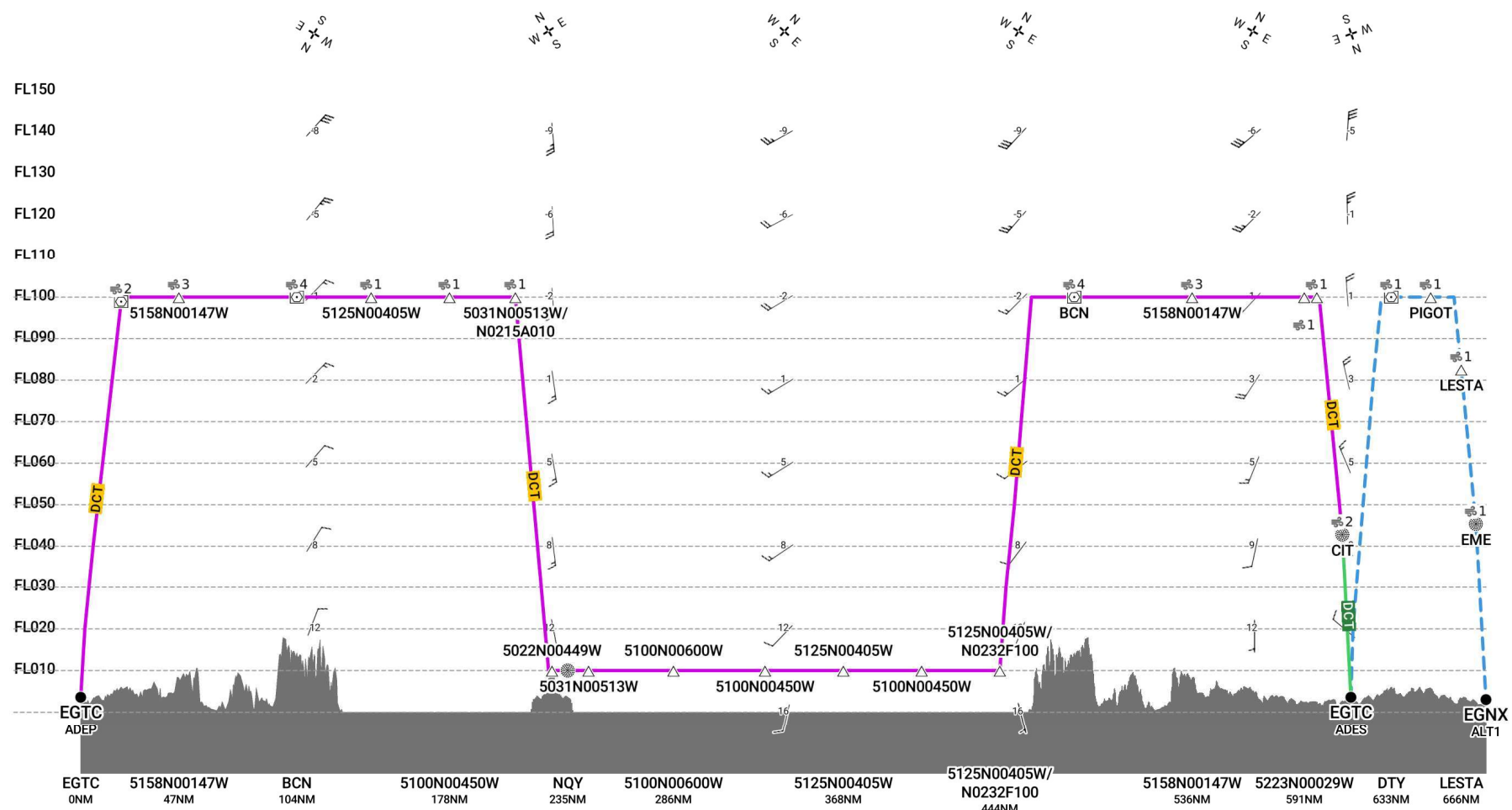
Upon completion of low-level training, climb to FL100 and recover to Cranfield, routing BCN, "PT06", "PT05", BAPIS, and CIT.

ETA EGTC 1230z.

© OpenStreetMap contributors and RocketRoute Ltd.



EGTC-EGTC [A/C GLUXE]



Route

SID/STAR

MEA

Route to ALT/TALT

Tropopause

Terrain

Caution: terrain data not available for Greenland.

FIR boundary

Airway Label

EDTO Markers

SEOPS Glide Cone Coverage

Direction of Wind

Wind shear

Direction of Travel

Clear Air Turbulence Scale

In Cloud Turbulence Scale

Caution, no data available

Icing Scale

Wind Speed

PAGE OF GENERATED: 14:53 UTC 11 JUL 2024 FLIGHT DOC REF#: 4124317 WWW.ROCKETROUTE.COM
THE PILOT IN COMMAND MUST VERIFY CORRECTNESS OF THIS INFORMATION. ROCKETROUTE ACCEPTS NO RESPONSIBILITY FOR ACCURACY OR COMPLETENESS