

Wednesday, 20 March 2024
MET1 - ATMOSPHERIC RESEARCH AIRCRAFT - G-LUXE

STD EGSS 1400z

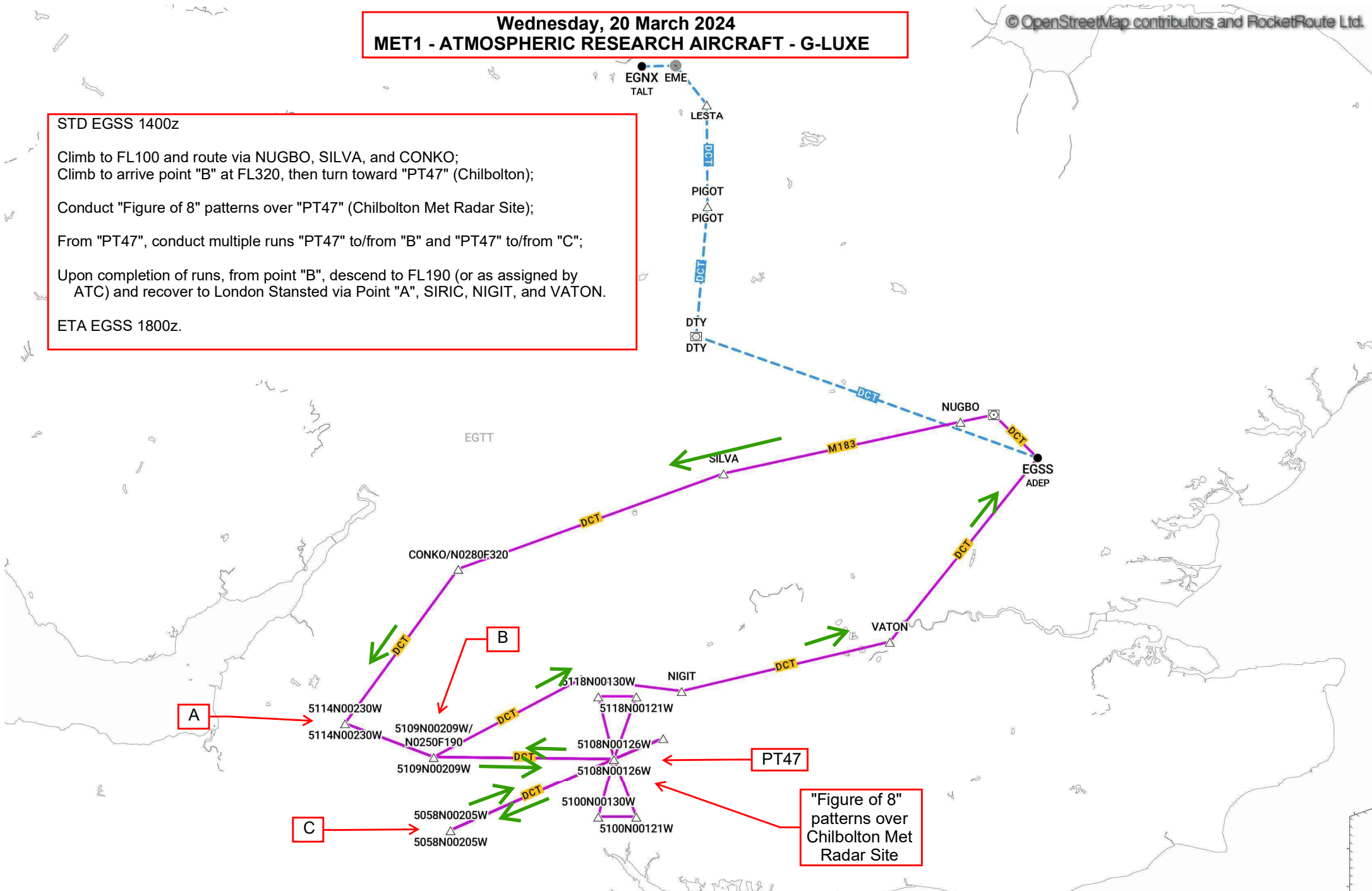
Climb to FL100 and route via NUGBO, SILVA, and CONKO;
Climb to arrive point "B" at FL320, then turn toward "PT47" (Chilbolton);

Conduct "Figure of 8" patterns over "PT47" (Chilbolton Met Radar Site);

From "PT47", conduct multiple runs "PT47" to/from "B" and "PT47" to/from "C";

Upon completion of runs, from point "B", descend to FL190 (or as assigned by ATC) and recover to London Stansted via Point "A", SIRIC, NIGIT, and VATON.

ETA EGSS 1800z.



EGSS-EGSS [A/C GLUXE]

