

Thursday PM, 03 November 2022  
MET1 - ATMOSPHERIC RESEARCH AIRCRAFT - G-LUXE

STD CYYR 1715z

Climb to FL150 and route northeast toward Labrador Sea;

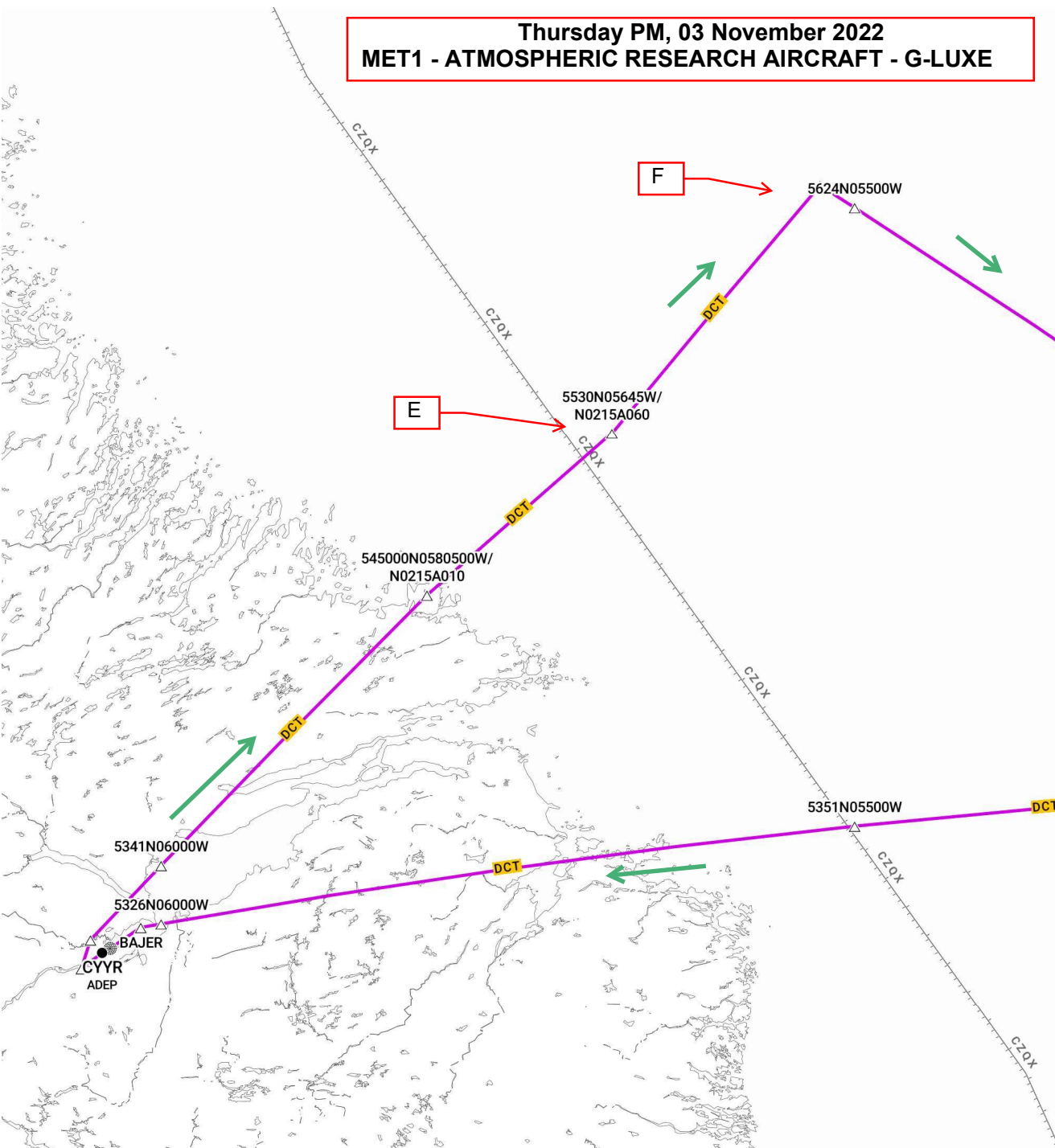
Descend to arrive point "E" at 100ft ASL, then climb to 6000ft ASL and continue to point "F";

At point "F" turn toward point "G" and begin "sawtooth" climb/descents btwn 2000ft ASL and approx. FL150;

At point "G" turn toward point "H" and descend to 1000ft ASL;

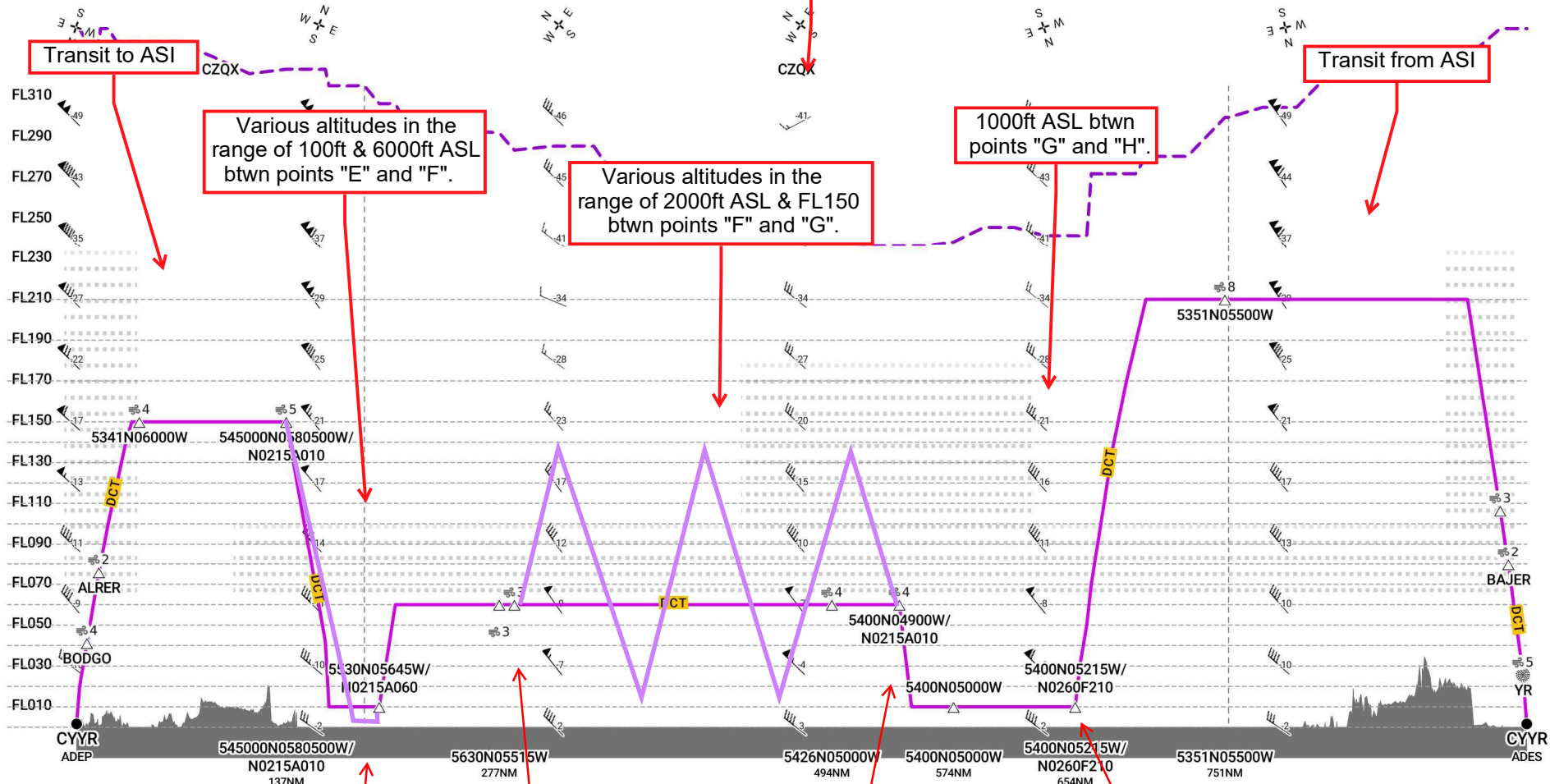
At point "H" climb to cruise altitude and recover to campaign base.

ETA CYYR 2100z.



CYYR-CYYR [A/C GLUXE]

Area of Scientific Interest (ASI) over Labrador Sea.



Legend:

- Route
- SID/STAR
- MEA
- Route to ALT/TALT
- Tropopause
- Terrain
- FIR boundary
- Airway Label
- ETO Markers
- SEOPS Glide Cone Coverage
- Direction of Wind
- Wind shear
- Direction of Travel
- Clear Air Turbulence Scale
- In Cloud Turbulence Scale
- Icing Scale
- Wind Speed

Caution: terrain data not available for Greenland.

