

Friday, 21 October 2022  
**MET1 - ATMOSPHERIC RESEARCH AIRCRAFT - G-LUXE**

Map contributors and RocketRoute Ltd.

STD CYYR 1400z

Climb to FL190 and route north toward Labrador Sea;

At point "C" turn toward point "D" and descend to 1000ft ASL;

At approx point "D" route back to point "C" and climb to FL150;

(Option to conduct "sawtooth" climb/descents btwn FL120 & FL150 on reciprocal leg (points "D" to "C")).

From point "C" climb to cruise altitude and recover to campaign base.

ETA CYYR 1800z.

6030N06400W/  
N0247F150

D

C

5600N06000W/  
N0263F190

5600N06000W/  
N0215A010

SATEV

YR

CYYR  
ADEP

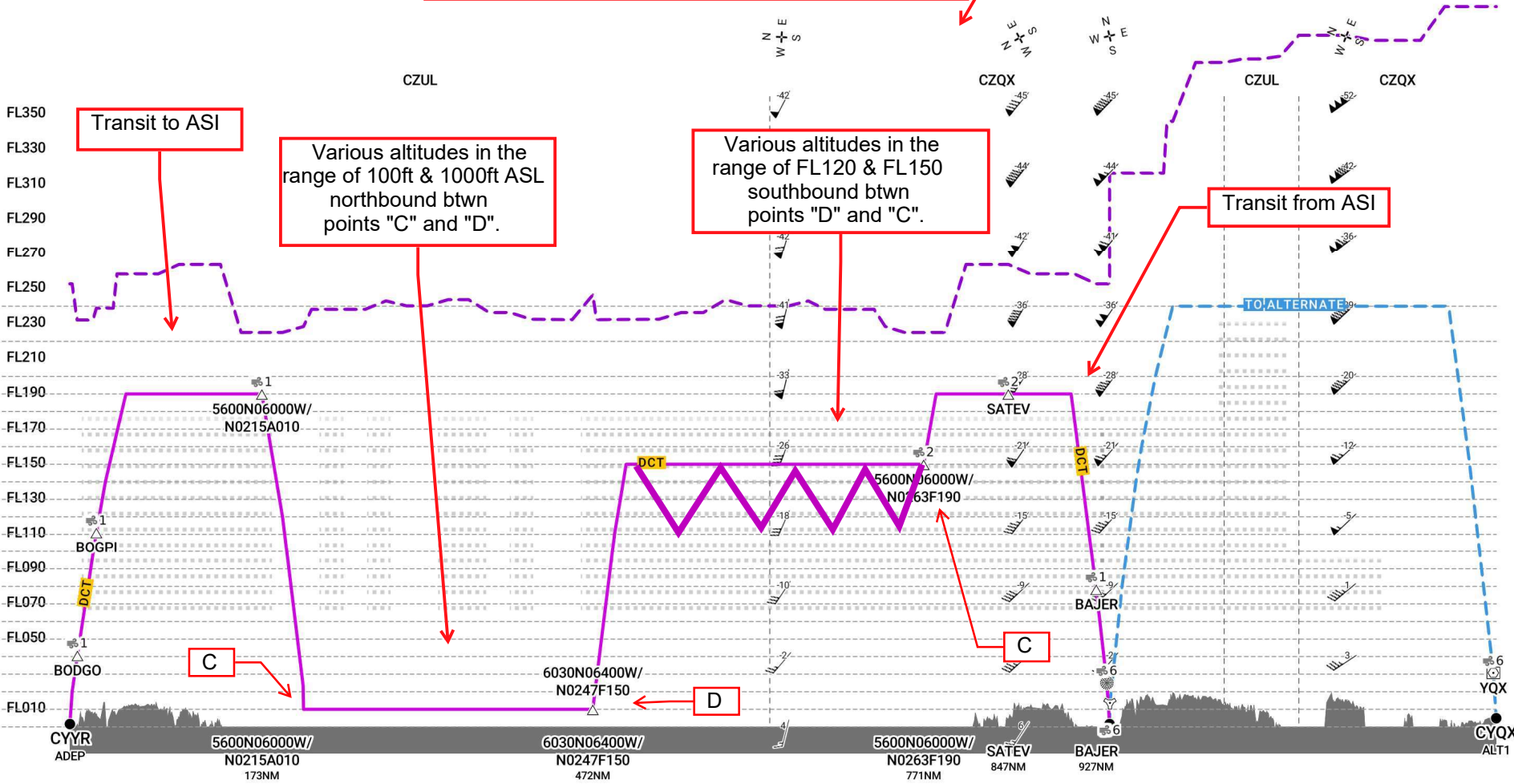
YQX

CYQX  
ALT1



CYYR-CYYR [A/C GLUXE]

Area of Scientific Interest (ASI) over Labrador Sea.



Route	FIR boundary	Clear Air Turbulence Scale
SID/STAR	Airway Label	In Cloud Turbulence Scale
MEA	ETO Markers	Caution, no data available
Route to ALT/TALT	SEOPS Glide Cone Coverage	Icing Scale
Tropopause	Direction of Wind	Wind Speed
Terrain	Wind shear	
Caution: terrain data not available for Greenland.		
Direction of Travel		

