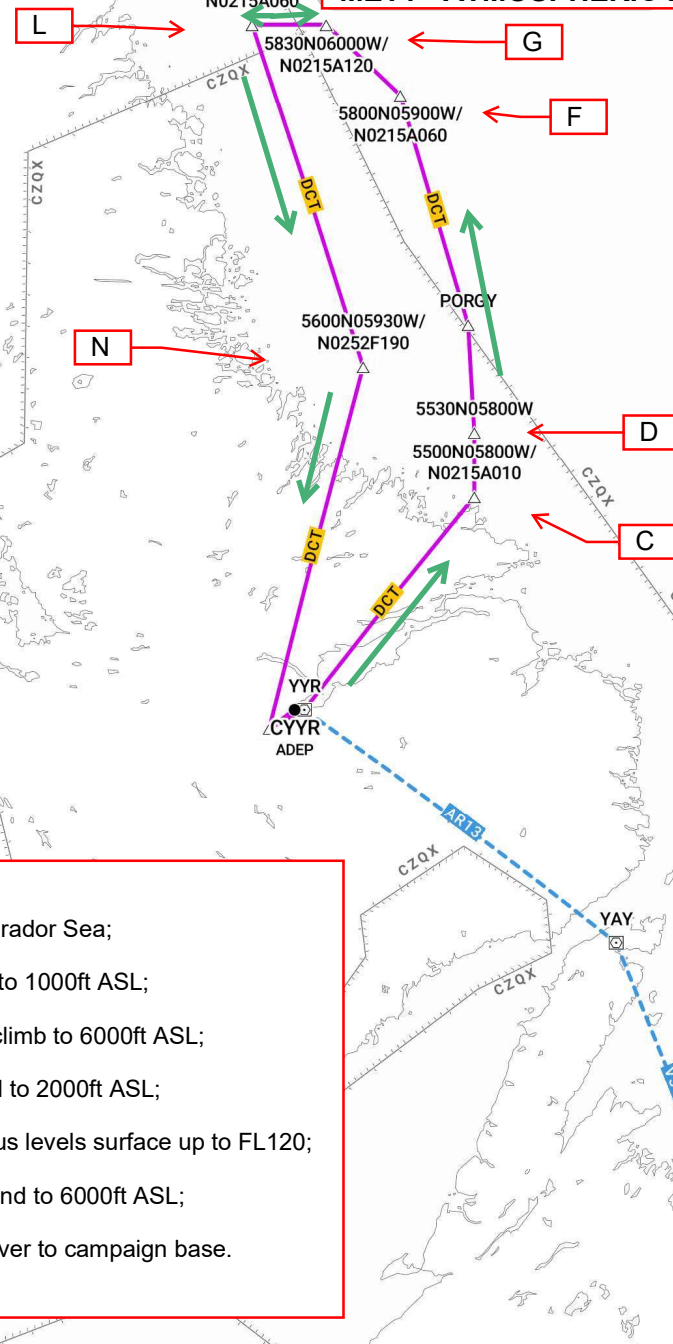


Tuesday, 18 October 2022
MET1 - ATMOSPHERIC RESEARCH AIRCRAFT - G-LUXE



STD CYR 1400z

Climb to FL190 and route northeast toward Labrador Sea;

At point "C" turn toward point "D" and descend to 1000ft ASL;

At approx point "D" route toward point "F" and climb to 6000ft ASL;

At point "F" route toward point "G" and descend to 2000ft ASL;

Conduct several runs btwn "G" and "L" at various levels surface up to FL120;

From point "L", turn toward point "N" and descend to 6000ft ASL;

From point "N" climb to cruise altitude and recover to campaign base.

ETA CYR 1800z.



CYYR-CYYR [A/C GLUXE]

