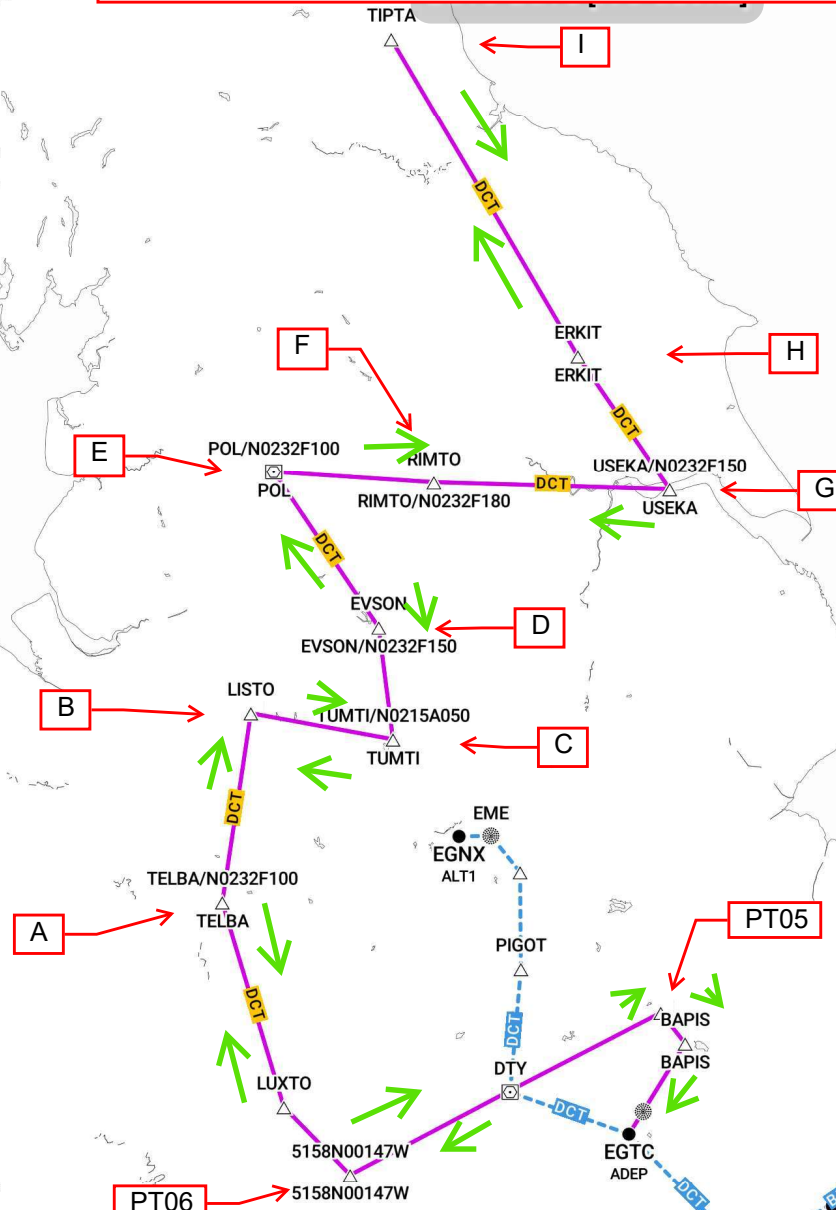


**Tuesday, 03 September 2024**  
**MET1 - ATMOSPHERIC RESEARCH AIRCRAFT - G-LUXE**

© OpenStreetMap contributors and RocketRoute Ltd.



STD EGTC 1300z

Climb to FL100 and route via "PT05" and "PT06" to LUXTO;

At LUXTO, descend to reach TELBA at 5000ft AGL and continue to LISTO;

At LISTO, turn toward TUMTI and climb to FL100.

At TUMTI, turn toward EVSON;

At EVSON, turn toward POL and climb to FL150.

At POL, turn toward RIMTO;

At RIMTO, continue to USEKA and climb to FL180.

At USEKA, turn toward ERKIT and continue to TIPTA;

At TIPTA, conduct reciprocal turn back to ERKIT and USEKA;

At USEKA, turn toward RIMTO and descend to FL150.  
Continue to POL;

At POL, turn toward EVSON and descend to FL100.

Continue to TUMTI;

At TUMTI, turn toward LISTO and descend to 5000ft AGL.

At LISTO, turn toward TELBA;

At TELBA, climb to FL100 and route via LUXTO to Daventry Corridor ("PT06", "PT05", BAPIS, and CIT).

ETA EGTC 1600z.



EGTC-EGTC [A/C GLUXE]

