

Tuesday, 13 May 2025
DCT146 - ATMOSPHERIC RESEARCH AIRCRAFT - G-LUXE

© OpenStreetMap contributors and RocketRoute Ltd.

STD EGSS 1000z

Climb to FL100 and route via Daventry corridor (PT05, PT06, BCN) to point "BCN245";

At point "BCN245", climb to FL250 and continue to point "PT18";

At point "PT18", conduct reciprocal turn toward "PT19".

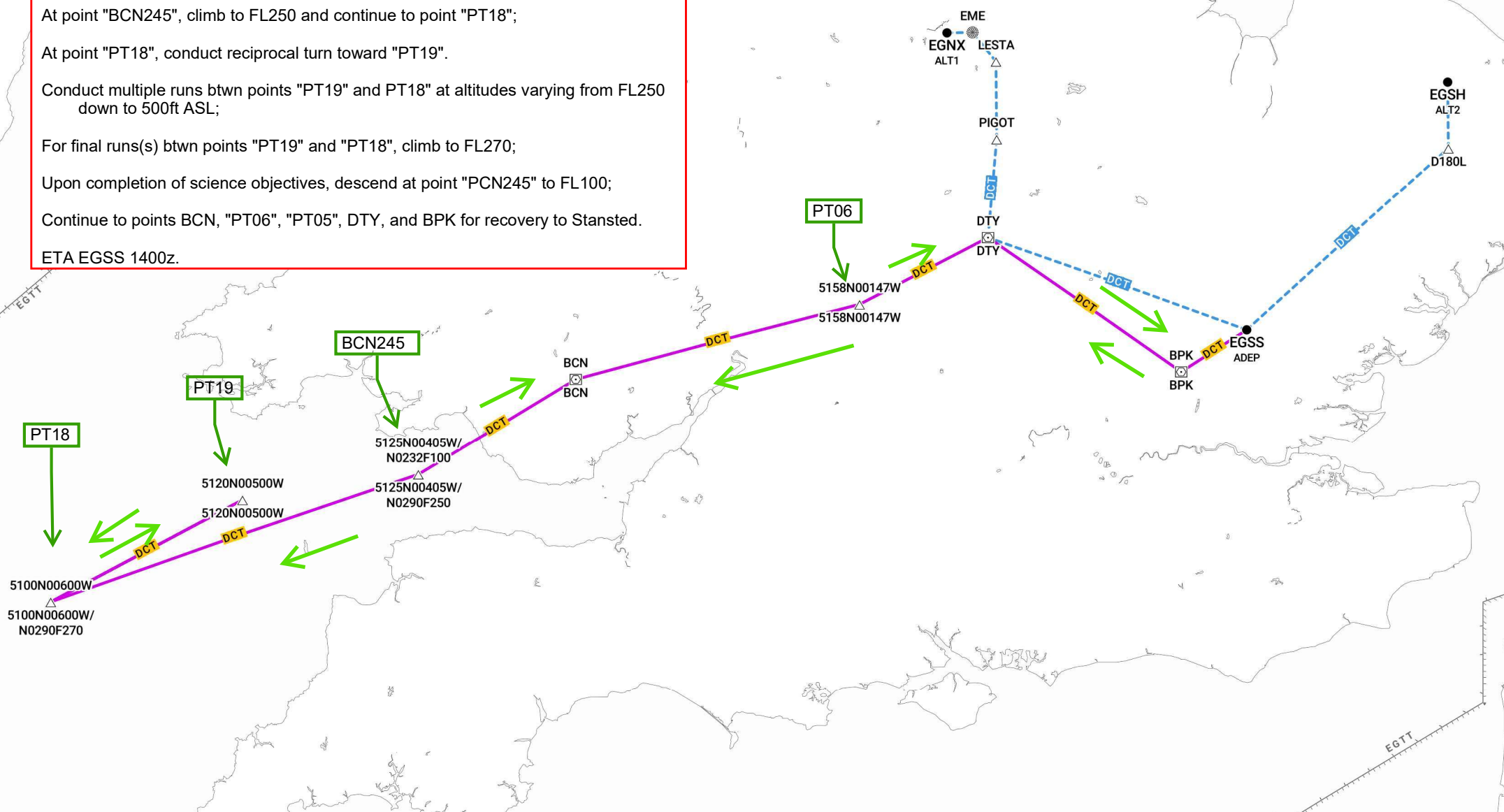
Conduct multiple runs btwn points "PT19" and PT18" at altitudes varying from FL250 down to 500ft ASL;

For final runs(s) btwn points "PT19" and "PT18", climb to FL270;

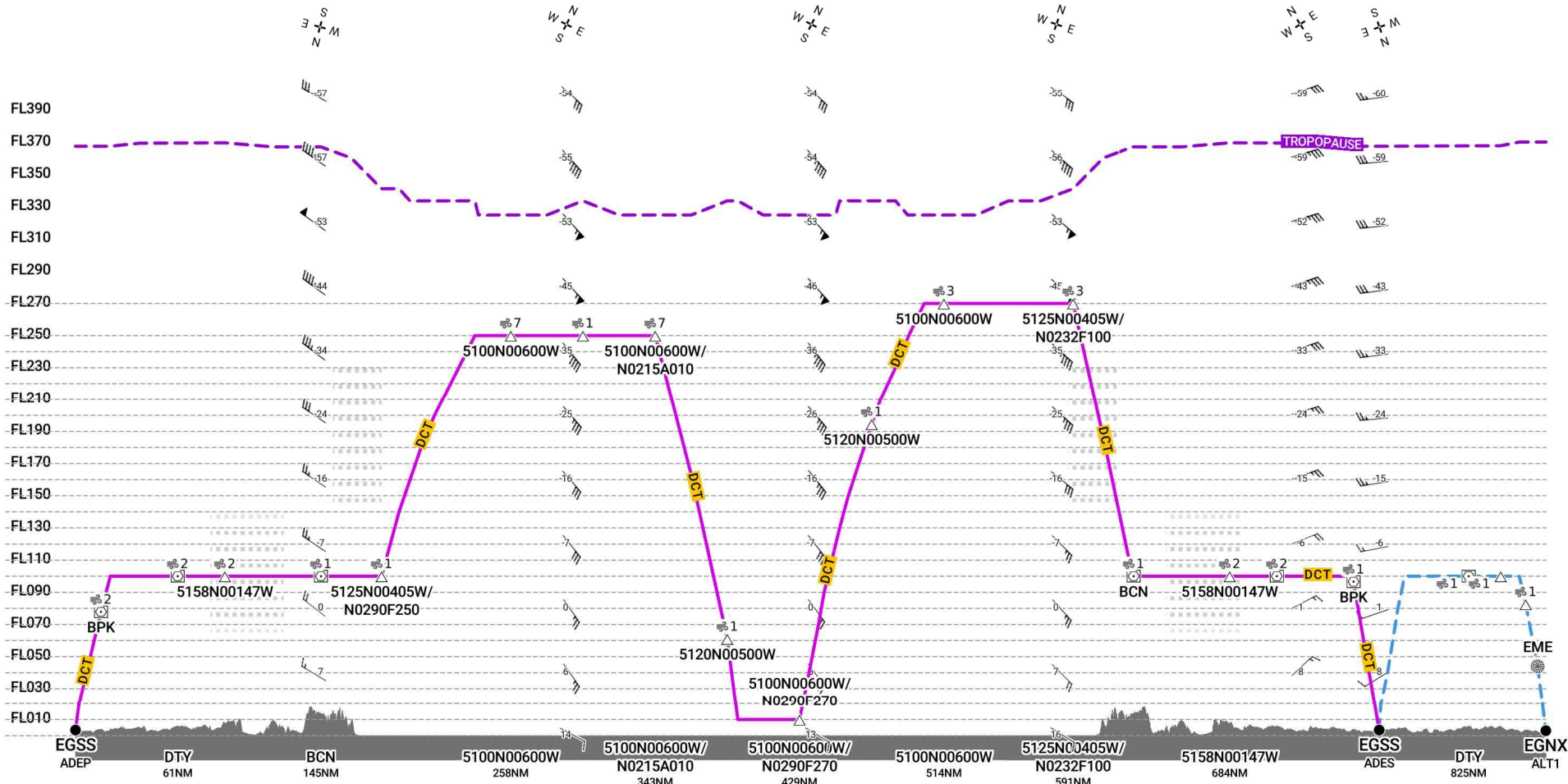
Upon completion of science objectives, descend at point "PCN245" to FL100;

Continue to points BCN, "PT06", "PT05", DTY, and BPK for recovery to Stansted.

ETA EGSS 1400z.



EGSS-EGSS [A/C GLUXE]



Route

SID/STAR

MEA

Route to ALT/TALT

Tropopause

Terrain

Caution: terrain data not available for Greenland.

FIR boundary

Airway Label

EDTO Markers

SEOPS Glide Cone Coverage

Direction of Wind

Wind shear

Direction of Travel

Performance Envelope

Clear Air Turbulence Scale

In Cloud Turbulence Scale

Caution, no data available

Icing Scale

Wind Speed

