

Friday, 16 May 2025  
DCT146 - ATMOSPHERIC RESEARCH AIRCRAFT - G-LUXE

© OpenStreetMap contributors and RocketRoute Ltd.

STD EGTC 1100z

Climb to FL100 and route toward East Anglia and North Sea area;

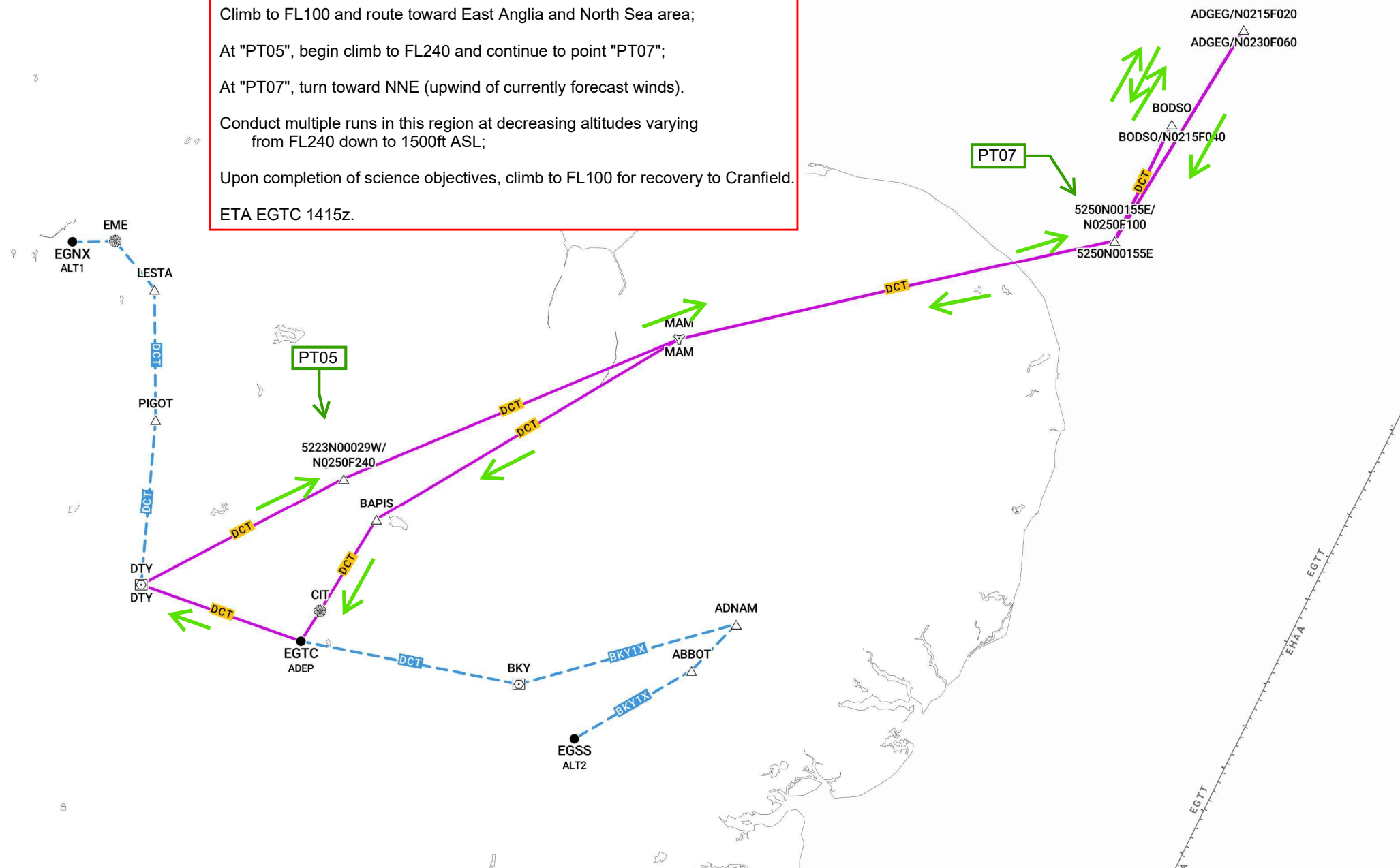
At "PT05", begin climb to FL240 and continue to point "PT07";

At "PT07", turn toward NNE (upwind of currently forecast winds).

Conduct multiple runs in this region at decreasing altitudes varying from FL240 down to 1500ft ASL;

Upon completion of science objectives, climb to FL100 for recovery to Cranfield.

ETA EGTC 1415z.



EGTC-EGTC [A/C GLUXE]

