

STD LOWI 0800z

Depart Innsbruck and climb to FL200 and route via NORIN, OBAXA, BETOS, and NORIN to point "A";

At point "A", continue through points "B", "C", "D", and "E";

At point "E", turn back to point "C";

Follow diamond pattern thru points "F", "B", "G", and back to "C"
 (Outside turns btwn above points (270-ish degree turns));

Repeat above Straight and Level runs and Diamond pattern at FL150 and FL180;

Upon completion of science survey, return to point "A";

Recover to Innsbruck via points NORIN and RTT.

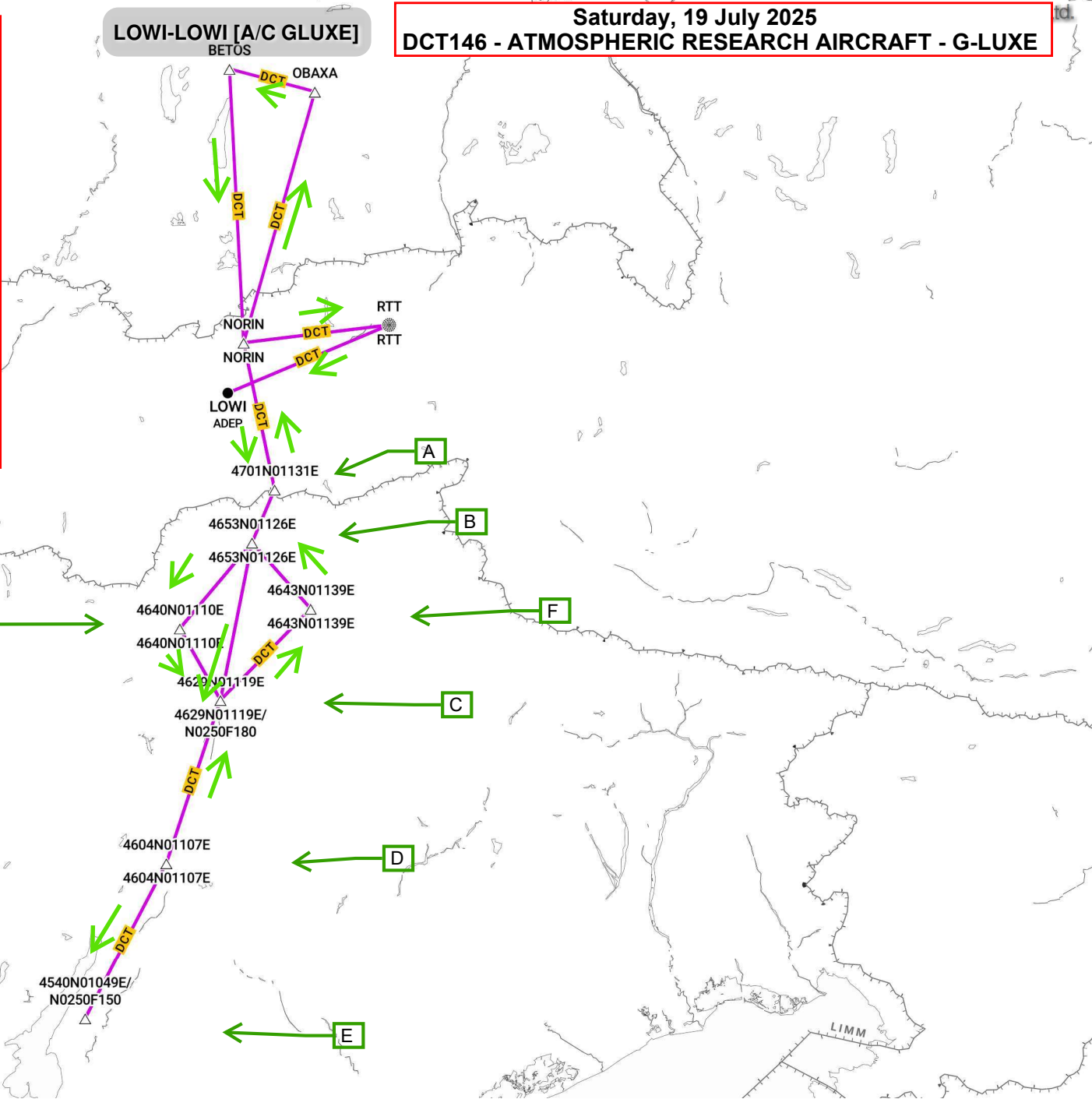
ETA LOWI 1120z.

REFUEL

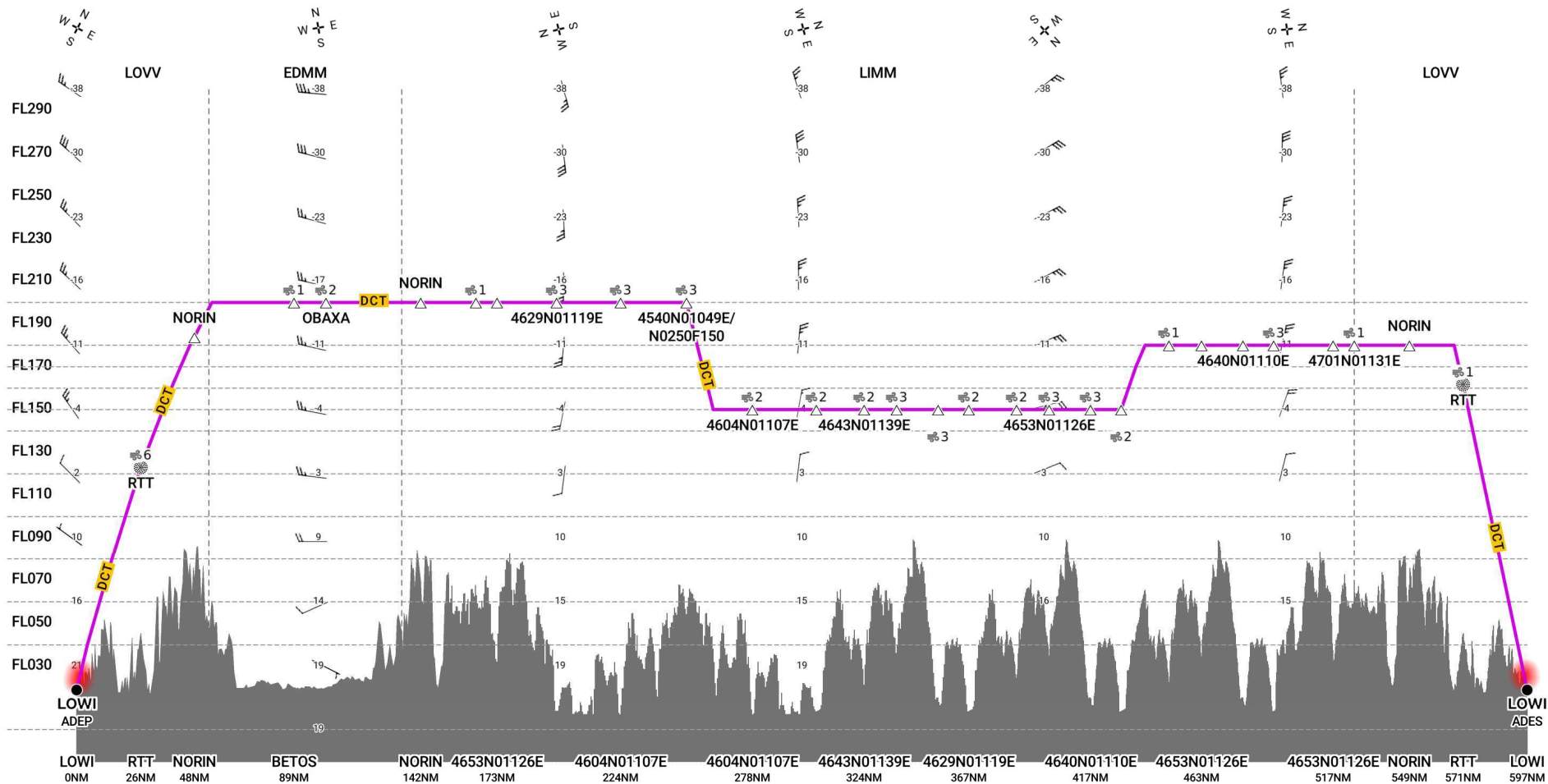
STD LOWI 1300z

Repeat of the above morning scenario.

ETA LOWI 1420z.



LOWI-LOWI [A/C GLUXE]



Route	FIR boundary	Clear Air Turbulence Scale In Cloud Turbulence Scale Caution, no data available
SID/STAR	Airway Label	
MEA	EDTO Markers	Icing Scale 10% 100%
Route to ALT/TALT	SEOPS Glide Cone Coverage	Wind Speed 5 Knots 10 Knots 50 Knots
Tropopause	Direction of Wind	Direction of Travel
Terrain Caution: terrain data not available for Greenland.	Wind shear	Performance Envelope

