

Monday, 12 May 2025
DCT146 - ATMOSPHERIC RESEARCH AIRCRAFT - G-LUXE

© OpenStreetMap contributors and RocketRoute Ltd.

STD EGTC 1000z

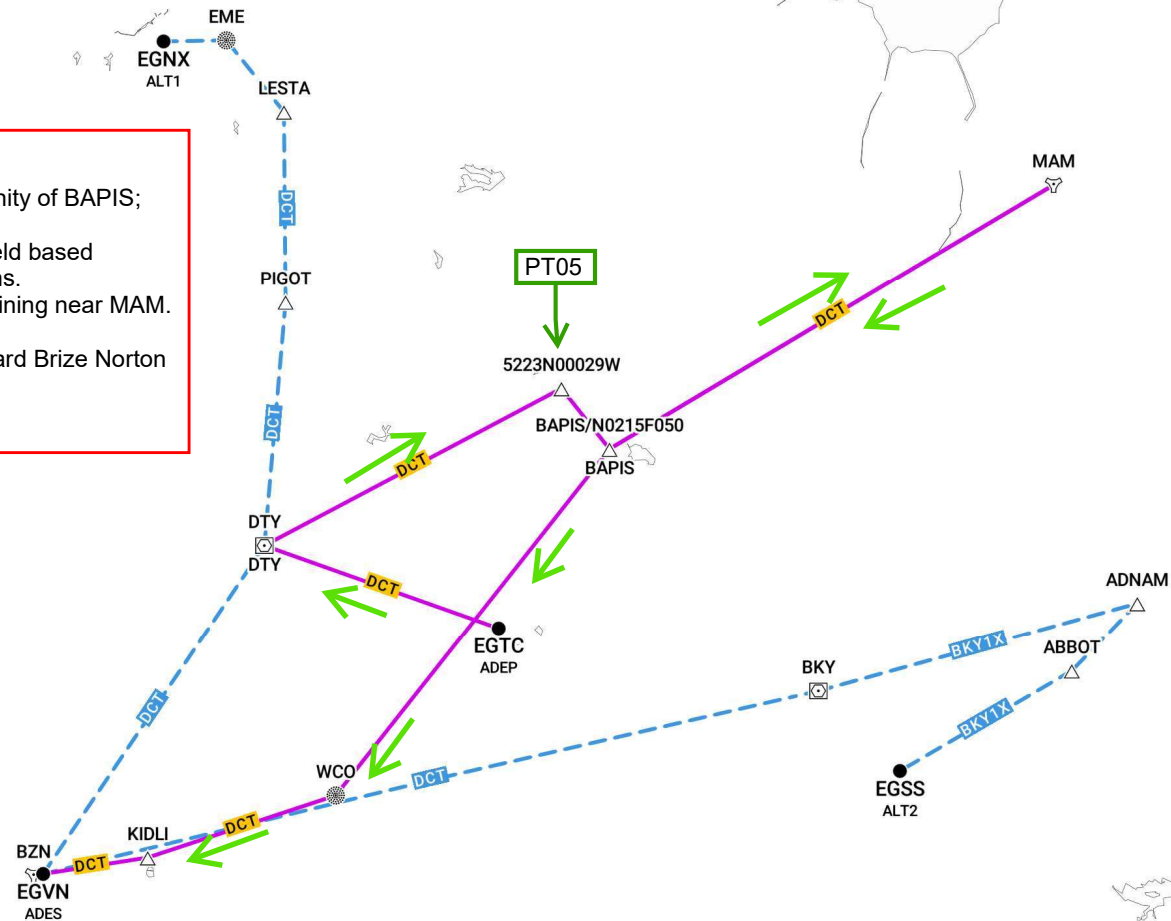
Climb to FL070 and position in the vicinity of BAPIS;

Conduct formation training with Cranfield based
SAAB340 for approximately 1hr45mins.

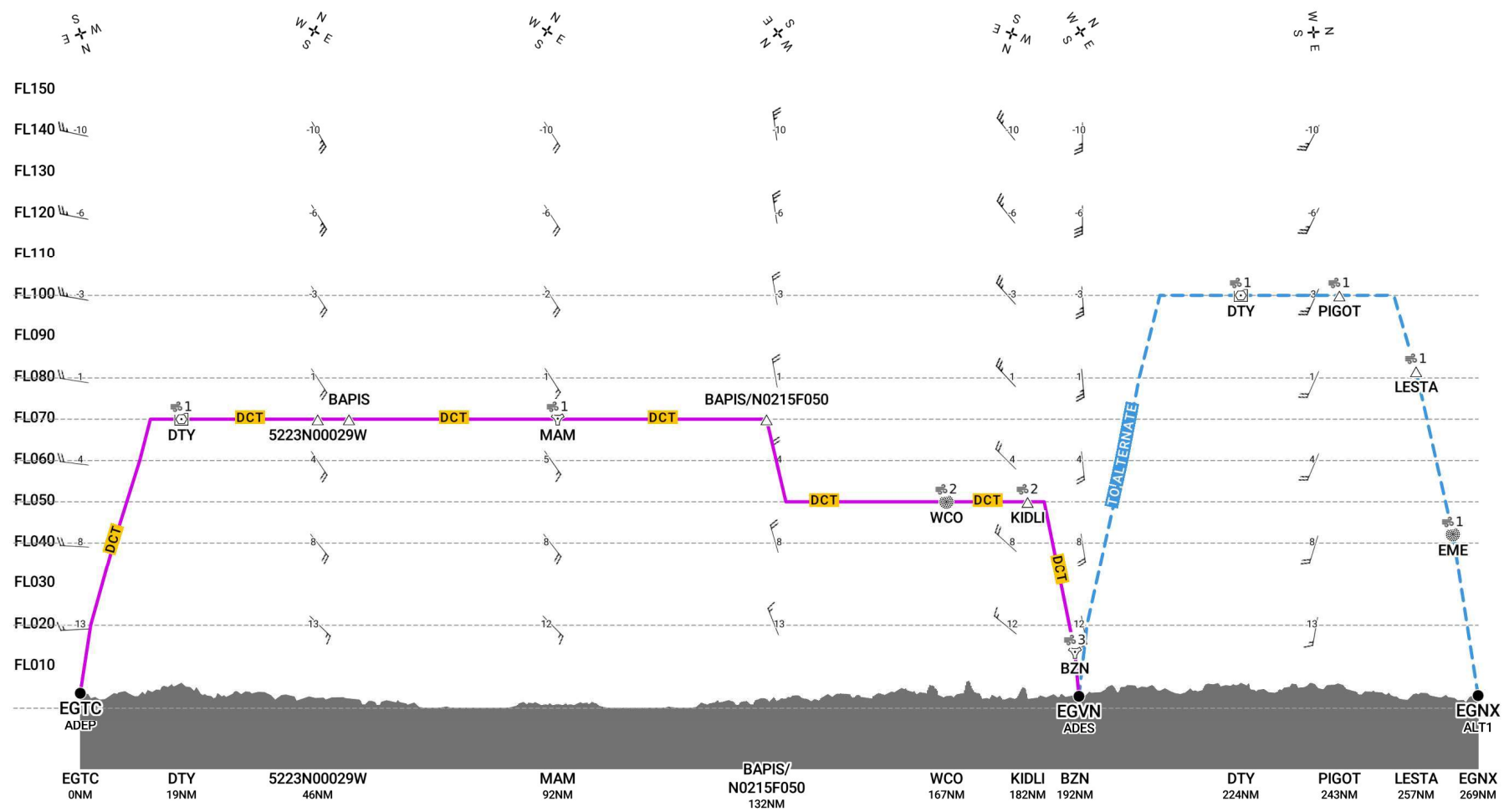
Work may also include formation training near MAM.

Upon completion of training, route toward Brize Norton
via BAPIS, WCO, and KIDLI;

ETA EGVN 1300z.



EGTC-EGVN [A/C GLUXE]



Route

SID/STAR

MEA

Route to ALT/TALT

Tropopause

Terrain

Caution: terrain data not available for Greenland.

FIR boundary

Airway Label

EDTO Markers

SEOPS Glide Cone Coverage

Direction of Wind

Wind shear

Direction of Travel

Performance Envelope

Clear Air Turbulence Scale

In Cloud Turbulence Scale

Caution: no data available

Icing Scale

Wind Speed

PAGE OF GENERATED: 11:44 UTC 09 MAY 2025 FLIGHT DOC REF#: 4394803 WWW.ROCKETROUTE.COM
THE PILOT IN COMMAND MUST VERIFY CORRECTNESS OF THIS INFORMATION. ROCKETROUTE ACCEPTS NO RESPONSIBILITY FOR ACCURACY OR COMPLETENESS