

LOWI-LOWI [A/C GLUXE]

STD LOWI 0800z

Depart Innsbruck and climb to FL200 and route via NORIN, OBAXA, BETOS, and NORIN to point "A";

At point "A", continue through points "B", "C", "D", and "E":

At point "E", turn back to point "C";

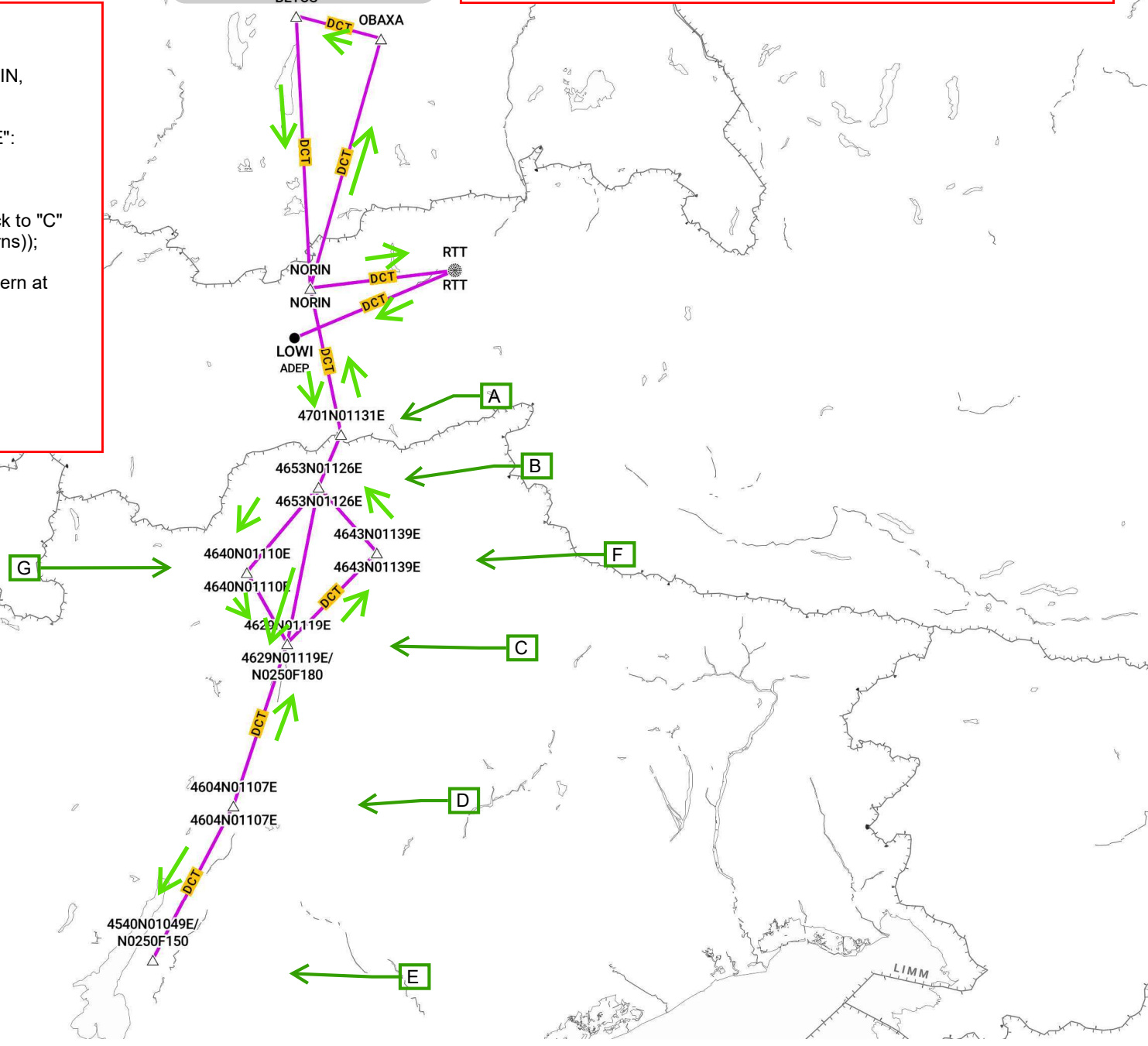
Follow diamond pattern thru points "F", "B", "G", and back to "C" (Outside turns btwn above points (270-ish degree turns));

Repeat above Straight and Level runs and Diamond pattern at FL150 and FL180;

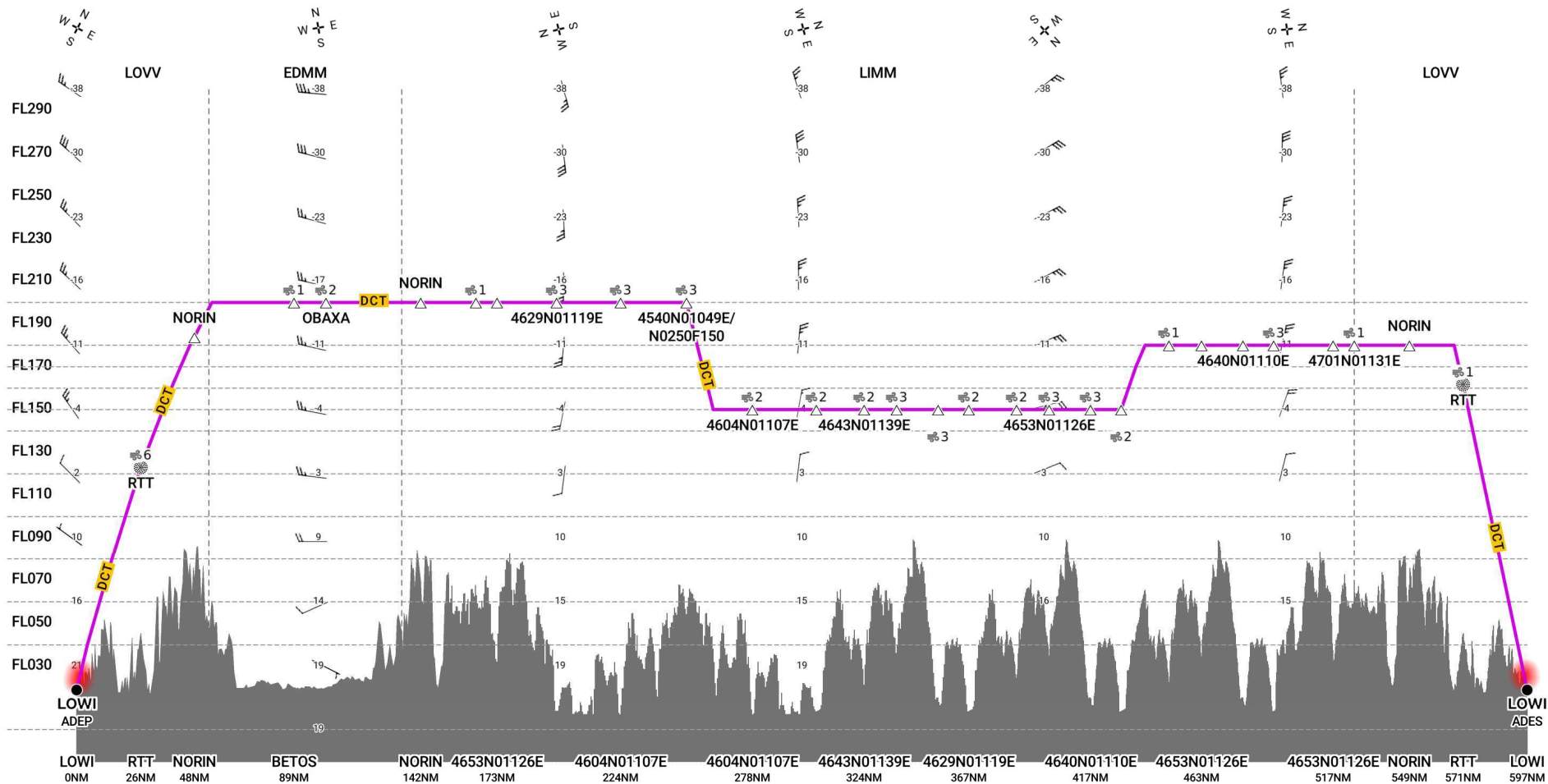
Upon completion of science survey, return to point "A";

Recover to Innsbruck via points NORIN and RTT.

ETA LOWI 1130z.



LOWI-LOWI [A/C GLUXE]



Route	FIR boundary	Clear Air Turbulence Scale
SID/STAR	Airway Label	
MEA	EDTO Markers	Caution, no data available
Route to ALT/TALT	SEOPS Glide Cone Coverage	Icing Scale
Tropopause	Direction of Wind	Wind Speed
Terrain	Wind shear	
Caution: terrain data not available for Greenland.	Direction of Travel	
	Performance Envelope	

